

PHASE TWO CONSULTATION

# Share your feedback



18 September – 14 November 2024

# Thank you for taking the time to share your views on the proposed Rosefield Solar Farm.

## How to respond to our consultation

This questionnaire is designed to be used having read about our proposals in the consultation booklet.

You can answer as many or as few questions as you like and are welcome to use the additional space at the end of the questionnaire to provide further information. If you would like to respond using map grid references, please refer to the map on pages 14 and 15 of this questionnaire.

You can respond to the consultation by:

- Completing this questionnaire online:  
[www.rosefieldsolarfarm.co.uk](http://www.rosefieldsolarfarm.co.uk)
- Posting this questionnaire or submitting your comments (no stamp required) to:  
**Rosefield Solar Farm**  
**FREEPOST SEC NEWGATE UK LOCAL**
- Submitting your comments or a completed questionnaire by email to:  
[info@rosefieldsolarfarm.co.uk](mailto:info@rosefieldsolarfarm.co.uk)

All responses must be received by the consultation deadline of **11:59pm on Thursday 14 November 2024.**

Following this consultation, we will consider all the feedback we receive and continue to refine our proposals ahead of submitting a Development Consent Order (DCO) application.


This consultation is seeking your feedback on our updated proposals for Rosefield Solar Farm, including the locations of its different elements.

## Q1: Do you have any overall comments on the updated proposals for Rosefield Solar Farm?

*Please indicate if your comments refer to a particular location or element of Rosefield (e.g. solar panels, collector compounds or our proposed mitigation measures). If you would like to respond using map grid references, please refer to the map on page 15 of this questionnaire.*


**Q2: Do you have any comments or suggestions on the proposed footpath enhancements?**

*For information on our proposed footpath enhancements, please see page 20 of our consultation booklet.*



**Q3: Do you have any comments on our environmental and landscaping proposals or suggestions for how we could further enhance the natural habitat within the site?**

*For information on our proposed environmental and landscaping proposals, please see pages 14 – 19 of our consultation booklet.*



**Q4: Do you have any comments on our ongoing assessment of potential environmental effects?**

*For information on our preliminary environmental assessments, please see pages 14 – 21 of our consultation booklet.*



**Q5: Do you have any comments on our approach to moving materials and construction workers, including on our outline Construction Traffic Management Plan?**

*Pages 25-29 of the consultation booklet summarise our approach to building Rosefield, including how materials and people would arrive to the site.*



**Q6: Please leave any further comments or suggestions you have on the updated proposals (for example, ideas for how Rosefield could support local community, education or skills development initiatives.)**



Use this space to expand on any answers you have given. Please include the question number your feedback refers to.



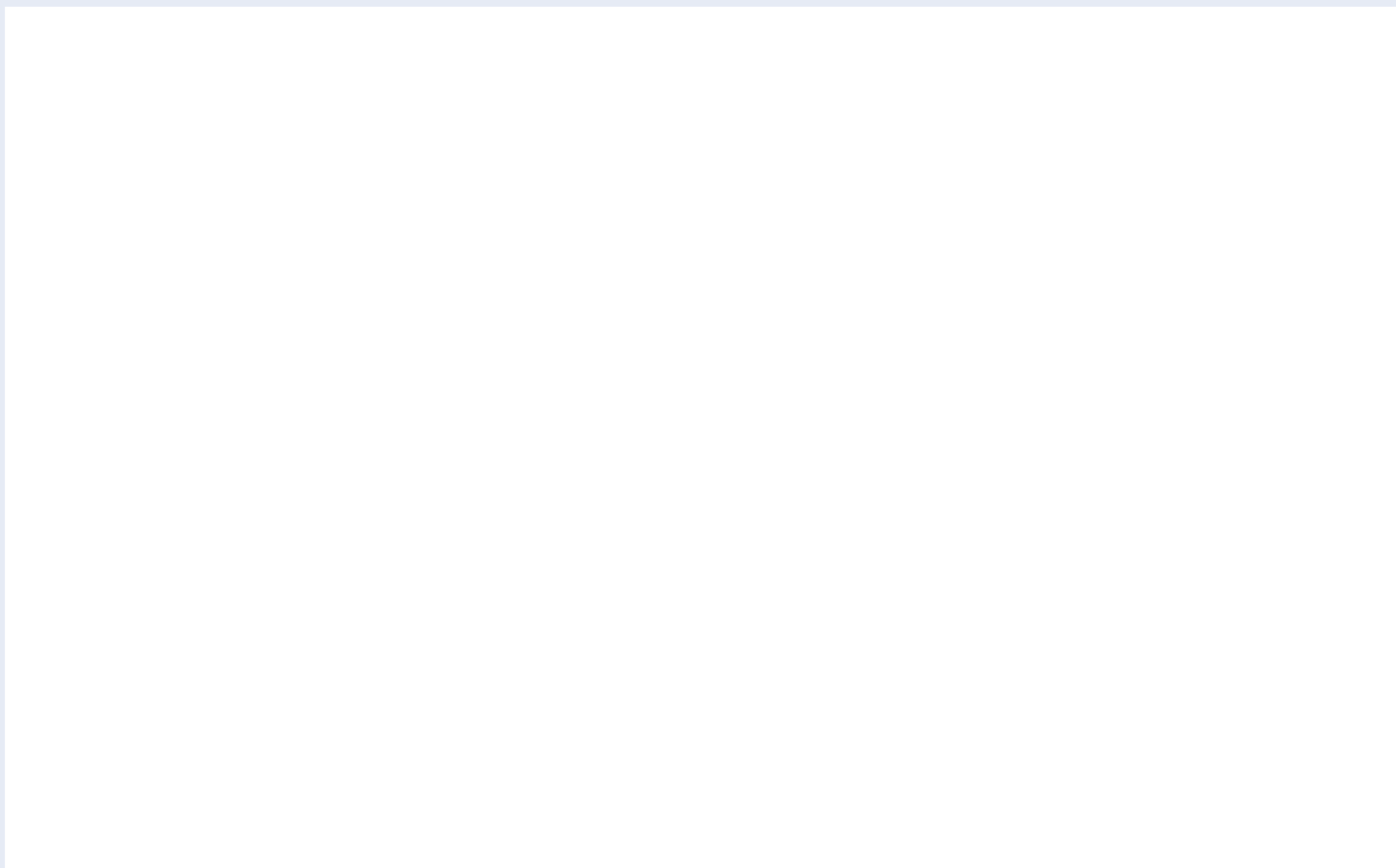
Use this space to expand on any answers you have given. Please include the question number your feedback refers to.



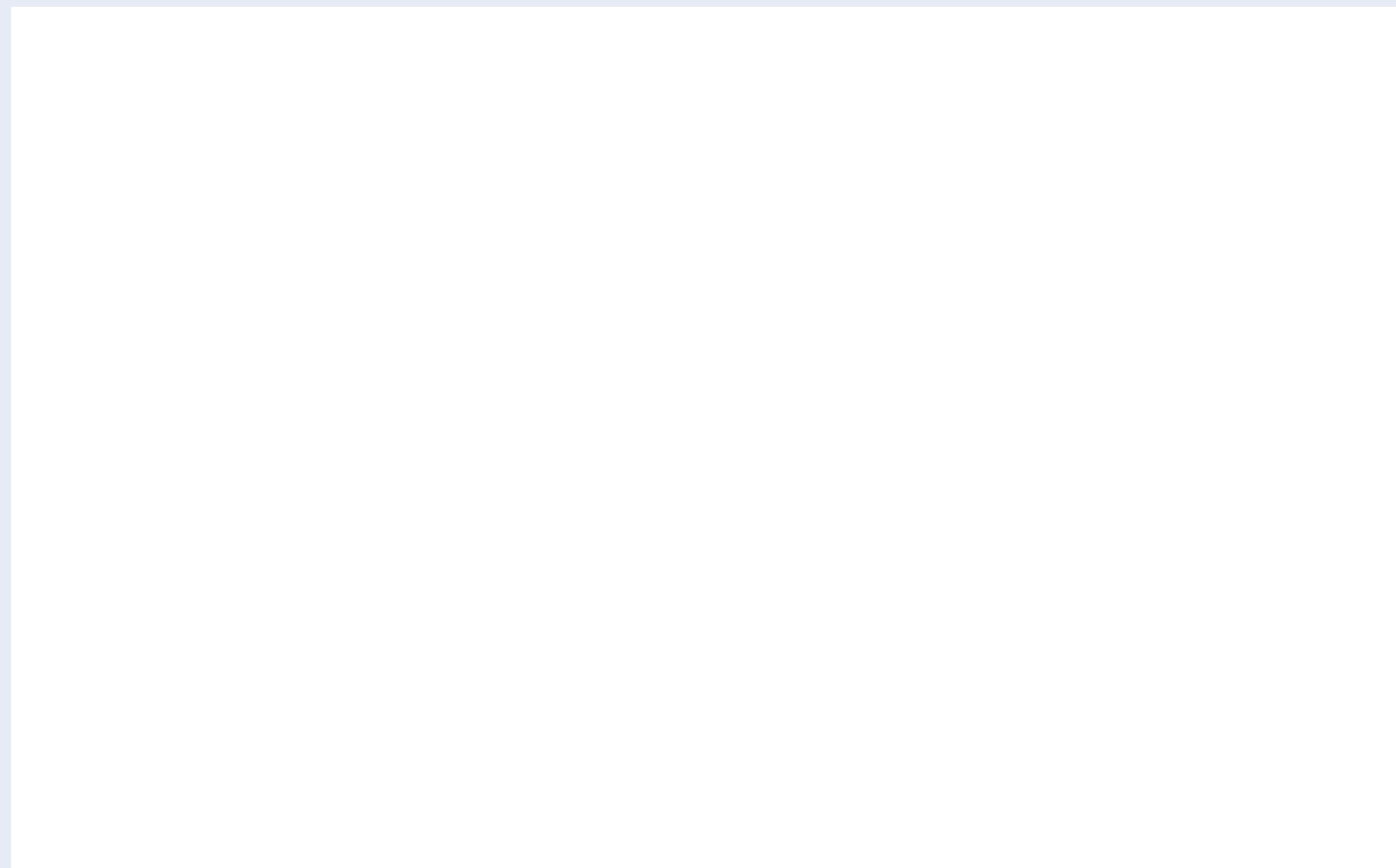
Use this space to expand on any answers you have given. Please include the question number your feedback refers to.



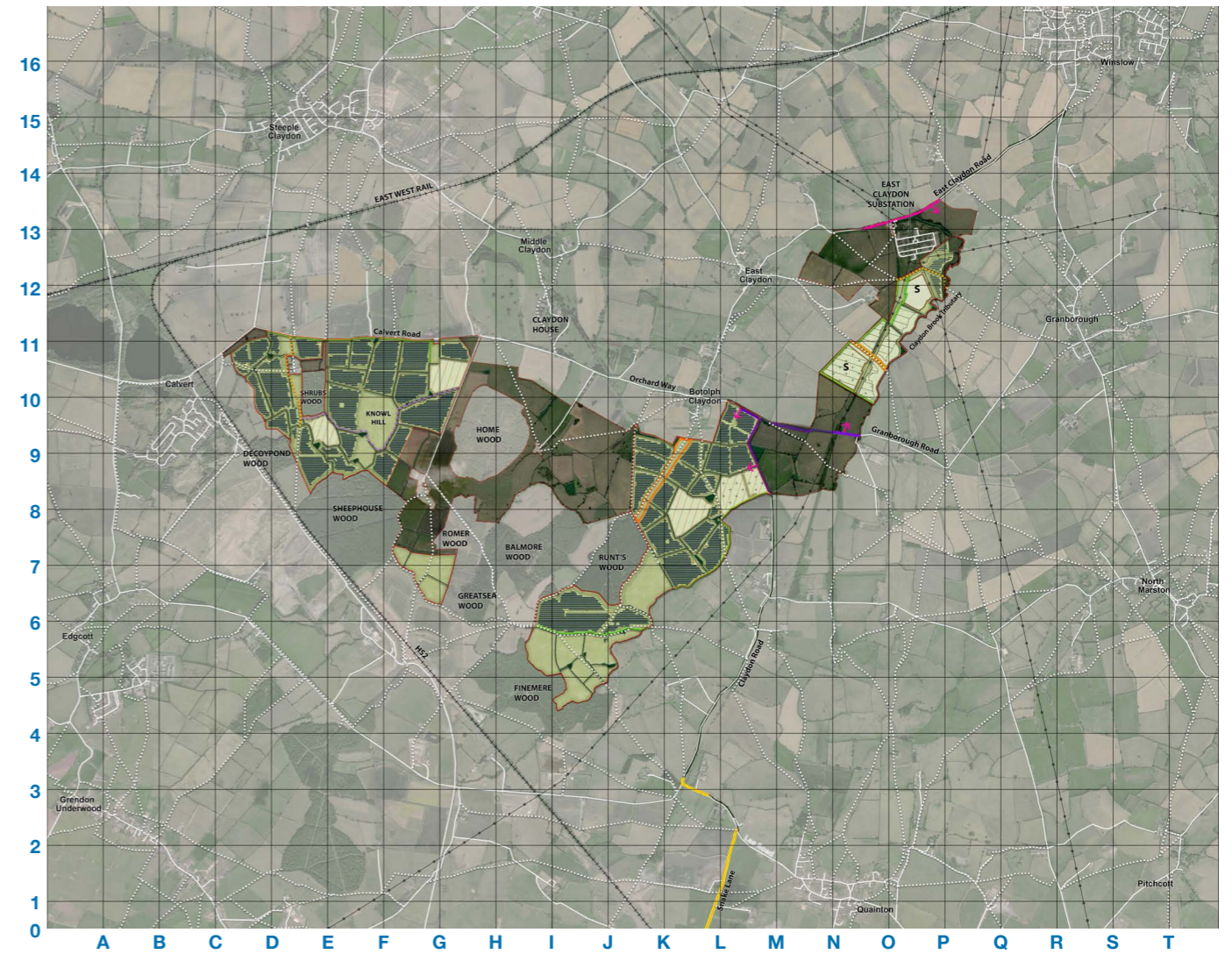
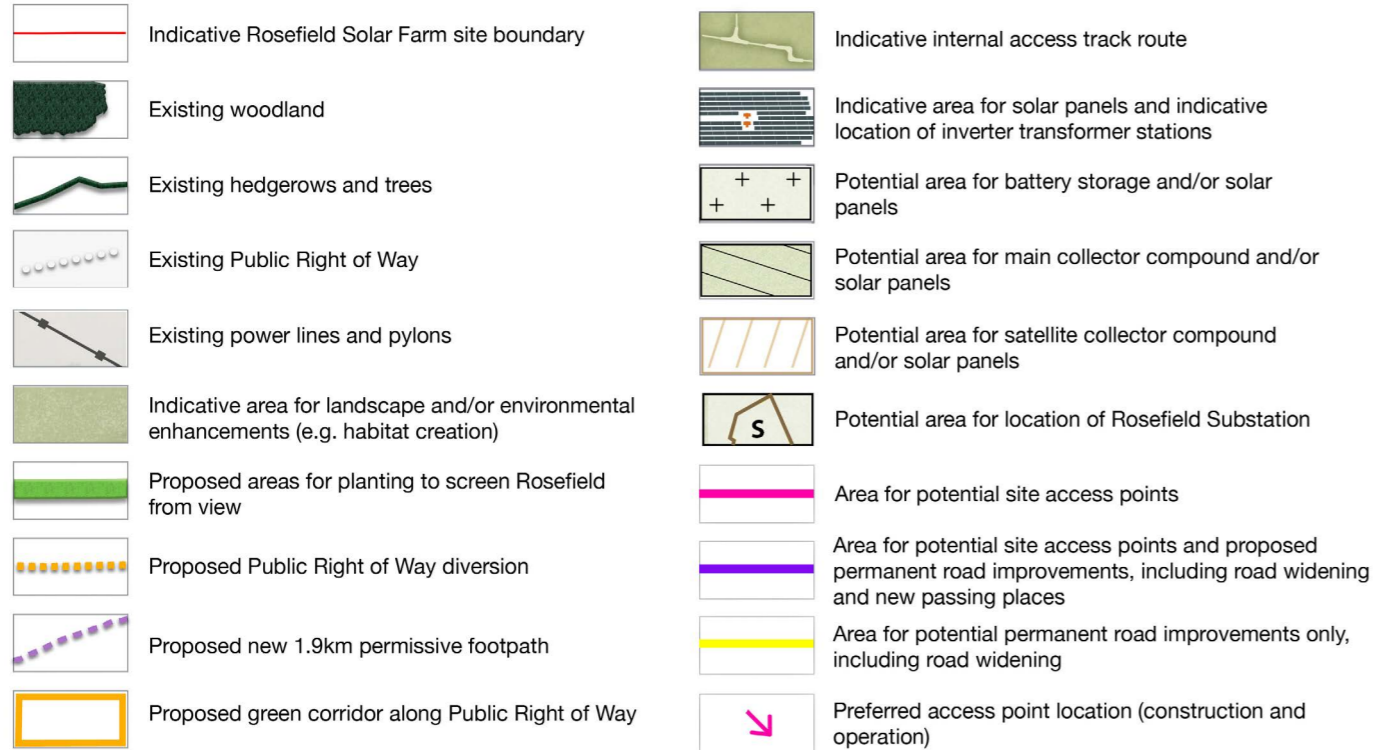
Use this space to expand on any answers you have given. Please include the question number your feedback refers to.



Use this space to expand on any answers you have given. Please include the question number your feedback refers to.



# Illustrative operational layout





## About you

If you would like to be kept updated on this project, please provide your contact details below:

If you'd prefer your comments to be anonymous, please provide us with your postcode so we can understand where you live in relation to Rosefield Solar Farm.

Name:

Address:

Email:

Are you responding on behalf of an organisation?

Yes

No

If yes, please provide the name of the organisation and your role within it.

Organisation:

Role:

Any comments received will be analysed by Rosefield Energyfarm Ltd and any of its appointed agents. Copies may be made available in due course to the Secretary of State, the Planning Inspectorate and other relevant statutory authorities so that feedback can be considered as part of the DCO process. We will request that any personal details are not placed on public record and will be held securely by Rosefield Energyfarm Ltd and its agents in accordance with the data protection law and will be used solely in connection with the consultation process and subsequent DCO application and, except as noted above, will not be passed to third parties. You can view our privacy policy here: <https://www.edf-re.uk/privacy-policy/>.